

	PETROL 95 ULP	PETROL 93 ULP & LRP	DIESEL 0.05%	DIESEL 0.005%	ILL. PAR.
GAUTENG PUMP PRICE (SA c/l) AS FROM 02/12/2020	1,446.000	1,426.000	-	-	-
WHOLESALE PRICE (SA c/l) AS FROM 02/12/2020	-	-	1,245.420	1,247.820	684.688
SINGLE NATIONAL MAXIMUM RETAIL PRICE	-	-	-	-	856.000
BASIC FUEL PRICE - 27/11/2020 (SA c/l)	512.620	504.906	527.080	528.059	509.417
PRESS RELEASE CONTRIBUTION TO BFP 27/11/2020 - 27/11/2020 (SA c/l)	506.470	496.470	474.630	477.030	451.128
UNIT OVER/(UNDER) RECOVERY - 27/11/2020 (SA c/l)	(6.150)	(8.436)	(52.450)	(51.029)	(58.289)
AVERAGE BASIC FUEL PRICE 27/11/2020 - 27/11/2020	512.620	504.906	527.080	528.059	509.417
AVERAGE UNIT OVER/(UNDER) RECOVERY 27/11/2020 - 27/11/2020	(6.150)	(8.436)	(52.450)	(51.029)	(58.289)

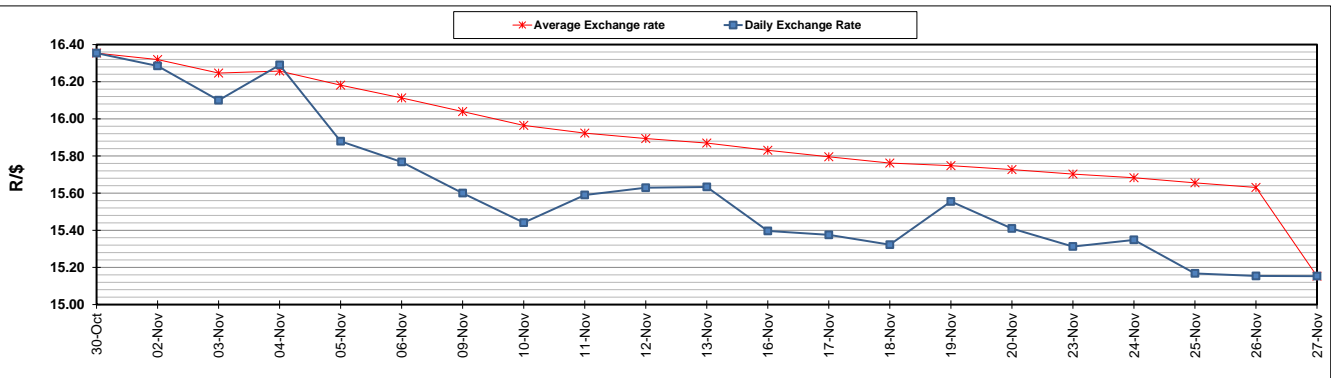
### ANALYSIS MOVEMENT OF AVERAGE OVER/(UNDER) RECOVERY

- MOVEMENT IN INTERNATIONAL PRODUCT PRICES
- MOVEMENT IN EXCHANGE RATE
- AVERAGE UNIT OVER/(UNDER) RECOVERY 27/11/2020 - 27/11/2020

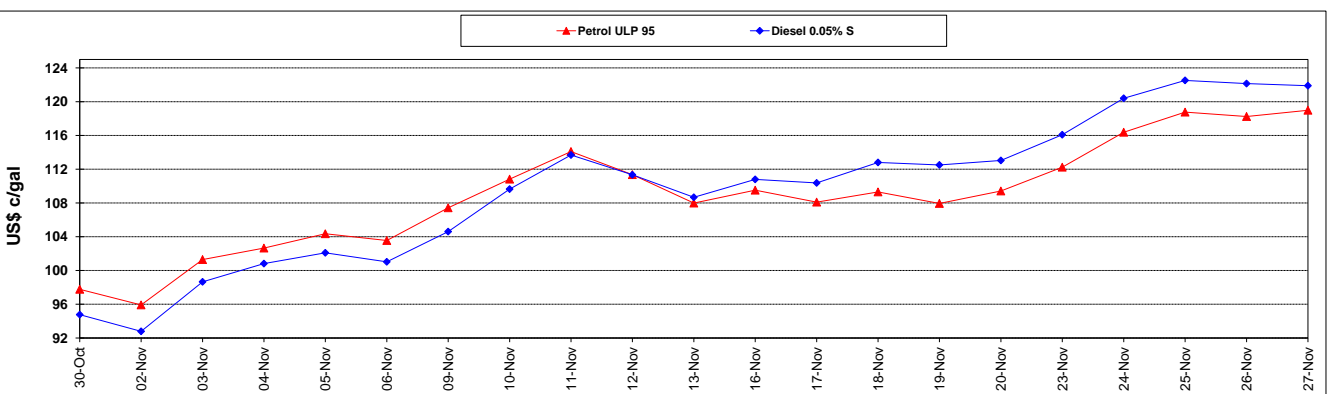
	PETROL 95	PETROL 93	DIESEL 0.05%	DIESEL 0.005%	ILL. PAR.
MOVEMENT IN INTERNATIONAL PRODUCT PRICES	(22.304)	(24.347)	(69.059)	(67.669)	(74.342)
MOVEMENT IN EXCHANGE RATE	16.154	15.911	16.609	16.640	16.053
AVERAGE UNIT OVER/(UNDER) RECOVERY 27/11/2020 - 27/11/2020	(6.150)	(8.436)	(52.450)	(51.029)	(58.289)

### R/\$ EXCHANGE RATE - (R/\$15.1530 - 27/11/2020)

#### EXCHANGE RATE USED IN BASIC FUEL PRICE



#### INTERNATIONAL PRODUCT PRICES OF BASKET USED IN BASIC FUEL PRICE



#### BASIC FUEL PRICE IN SA CENTS PER LITRE

